

Customers First



TRIPLE J AUTO GROUP

The Largest Selection of Brands on Guam



Robbie Webber Youth League



GOLDEN MOMENTS, LASTING LEGACIES



2026 Rules & Regulations | Under 17



Guam Football Association



2026 SPRING TRIPLE J RWYL U17 Girls

Under-17 (August 1, 2008 – July 31, 2011)

Field of Play	105 x 65 ; GFA-2	Suggested Roster Size	14-16
Ball	Size 5 Provided by Home team	Goalkeeper (Y/N)	Yes
Duration	U17 Girls: 2 x 30min; 5 min half time	Substitution	5 Opportunities with unlimited number of players each time; (at the halfway line)
Players on field	11v11: Maximum – 11 ; Minimum - 7	Referees	3-Man or 2-Man System

1. ORGANIZATION OF COMPETITION

- ✘ The name of the competition shall be the GFA Triple J RWYL – U17 Girls, hereafter, referred to as “the competition”.
- ✘ The competition shall be organized by the GFA Competition Committee and Football Events, hereafter referred to as “the Committee”.
- ✘ The GFA Football Event Department (hereafter called “the Department”) will bear the sole responsibility for league operations and can be reached at gfafed@theguamfa.com.

2. COMPETITION VENUE & MATCH DATES

- ✘ The competition venue shall be held at the GFA National Training Center in Harmon.
- ✘ The competition will be played on **Saturdays** unless otherwise stated on the official competition schedule.
- ✘ The official start date is **January 24, 2026**, and the season concludes **depending on the number of teams submitted**.
- ✘ GFA reserves the right to modify the competition schedule so long as teams are given ample notice.

3. COMPETITION ENTRY & REQUIREMENTS

- ✘ Club’s Power Up Administrator must enter a team into the Power Up Convenor >> Manage>> Manage Teams>>Submit Governing Body;
- ✘ Team entry must be submitted on time for the department to schedule the league accordingly.
- ✘ Clubs that have any outstanding financial and/or disciplinary obligations will not be allowed entry into the competition. For the current league, the club will have thirty (30) days to pay the competition league fee and any additional fees. Failure to pay within the timeline will result the team and/or individual awards to be forfeited.
- ✘ **Clubs will submit the team through Jotform by December 19,2025.**



*Vehicle entry only allowed at GFA Main Gate Entrance and GFA South Gate Entrance. Entrances denoted with a pink box are for pedestrians only. All youth athletes must be accompanied by an adult. The designated drop off area is between GFA 1 + Futsal Entrance and GFA 2 + GFA 3 Entrance only. Yellow boxes denote spaces where pop up tents are allowed.

4. ROSTER LIMIT

- ✘ Teams have a roster limit of 25 players.
- ✘ Coaches must show a complete Power Up Sports Team roster with a player photo. A paper/picture copy of the team roster with a player photo is acceptable.
- ✘ Teams may also have up to six delegates, head coach, assistant coach, team manager, goalkeeper coach, high-performance coach, and team doctor in the technical area.
- ✘ Coaches are to have at least a **GFA “D” or higher license for the U17 Girl’s Division. Proof of coaching license will need to be uploaded into the coach's personnel profile.** GFA will conduct random inspections for the validity of each registered coach in this division.

5. PLAYER ELIGIBILITY

- ✘ A player may participate in the competition if she has a current Power Up Sports account and any outstanding balances and fines are “processed”.
- ✘ All players’ registration into the league: **ALL SALES FINAL. NO REFUND.**
- ✘ A player in the Robbie Webber Youth League cannot participate in the **2025-2026 Women’s G-League.** Any player selected to be part of the U16 Women’s National Development Team will be exempt from this rule, see Article 6 & 7 below.
- ✘ Players must be born within the *fiscal year* corresponding to the group (**August 1, 2008 – July 31, 2011**). To be eligible to participate, all players must:
 - Be registered in **Power Up**,
 - Provide a **Birth Certificate** or **GFA Verification of Birth Document**,



- Submit a **recent photo**,
- Have **no outstanding disciplinary sanctions and/or fines**.

- ⚡ **National Academy Team players are exempt from the fiscal year calendar.**
- ⚡ **National Academy Team players must be registered in the League Power Up system in order to participate.**
- ⚡ Only players who meet all the above criteria will be considered eligible for participation.

GFA retains the right to its policy regarding player registration. Failure to provide the player's proof of Date of Birth (or providing erroneous information, or an unacceptable document) will cancel the player's application for registration. The Guam Football Association reserves the right to modify or supplement the provisions of player registration at any time.

- ⚡ **A player may only be registered to one team during the competition. Except for those in the National Academy Team. Once she participates in any portion of a match, she may not transfer to another team until the next season.**
- ⚡ A player must have played in TWO (2) regular season matches to be eligible to participate in the playoffs.
- ⚡ A registered player is when payment in full to the member club (if applicable) AND to the GFA registration fee. Should any payment be found "pending" or not paid, the player will be considered ineligible. (Refer to Item 6).
- ⚡ Anyone who does not meet the above requirements will be considered ineligible.

6. Matters Regarding Selected U14 National Academy Players Participating in the RWYL Sanctioned League

- a. **Eligibility: 2011-2014 players selected for the U14 National Academy team can participate in one of these options:**

	Member Club	National Academy
Option 1	RWYL U17 Girls Division	U17 Girl Division
Option 2	RWYL U14 Haya/Lagu	U17 Girl Division
Option 3	RWYL U14 Astra	U17 Girl Division

- b. **Conflict of Interest in Matches**

If the U14 National Academy Team is scheduled to play in a league match against a Member Club with players on the national academy roster, those players will remain under the club's jurisdiction for the said match. However, the Member Club has the option to release the said player(s) at their discretion.

- c. **Schedule of Matches**

The match between the U14 National Academy Team and the Member Club will be played at the GFA NTC (Date and Time will be forthcoming).



d. **Player Eligibility**

The U14 National Academy player must be registered in both her respective club and for the national academy.

7. **Matters Regarding Selected U16 Women's National Development Team Players Participating in the RWYL Sanctioned League**

- a. **Eligibility: 2008 – 2011 born players selected for the U17 Women's National Development Team can participate in one of these options:**

	Member Club	National Team
Option 1	RWYL U17 Girls Division	Women's G-League
Option 2	Women's G-League	Women's G-League

b. **Conflict of Interest in Matches**

Suppose the U16 National Academy Team is scheduled to play in a league match against a Member Club with players on the national academy roster. In that case, those players will remain under the club's jurisdiction for the said match. However, the Member Club has the option to release the said player(s) at their discretion.

8. **INELIGIBLE PLAYER (per Art. 58 of 2021 GFA Disciplinary and Ethics Code)**

- ✘ If a player is fielded in an official match despite being ineligible, her club will be sanctioned by forfeiting the match and paying a minimum fine of \$25.

9. **FORMAT OF COMPETITION**

- ✘ Each match will consist of two (2) equal thirty (30) minute halves with a halftime in between not exceeding ten (10) minutes.
- ✘ A match is played by two (2) teams; each consisting of not more than eleven (11) players, one of whom is the goalkeeper. A match may start if either team consists of no-fewer than seven (7) players.
- ✘ Standings: Competitive division will play single round robin. A club's standing in its division shall be determined in the following manner:
 1. Total points gained (Win = 3 points, Draw = 1 point, Loss = 0 points)
 2. Head-to-Head (if more than two teams, skip to 4.)
 3. Goal Differential
 4. Greater number of goals
 5. Fewest number of forfeits
 6. Fewest number of disciplinary points
- ✘ There **WILL** be standings and awards in the "U17 Girls" division awarded to first place and runner up with 20 medals maximum for each team.
- ✘ The committee reserves the right to make changes to the format if the need arises.



10. MATCH REGULATION

- ⚡ Current IFAB 2025/2026 Laws of the Game shall apply except as amended herein.
- ⚡ By participating in this competition, all players, coaches, team officials, parents, and spectators agree to abide by these rules and any sanctions for violating these rules.
- ⚡ **Respect the referees. These are youth referees under development and shall be respected and treated fairly. No verbal abuse or harassment will be tolerated. Refer to the zero-tolerance policy and fair play campaign. To report any abuse or harassment towards referees to the GFA Jotform: This could also be found on the GFA Webpage: www.guamfa.com Link: [GFA Incident Report](#)**

i. General Rules

- ⚡ Safety: Goals must be anchored securely to the ground. To assist with the safety of all players, coaches, referees, and staff should check.
- ⚡ Ball: The balls must provide by the home team (listed first). Should the ball provided by the home team not be adequate, the visiting team must provide a ball to use.

ii. Substitutions

- ⚡ Five (5) Opportunities with unlimited number of players each time; (at the halfway line).
- ⚡ The referee must be informed before any substitution is made.
- ⚡ The substitute only enters during the stoppage of play at the halfway line after the player has left the field after receiving a signal from the referee to enter.

⚡ Half-time substitutions do not count towards the five (5) substitution opportunities.

ii. Players' Equipment

⚡ Basic Equipment: The basic compulsory equipment of a player comprises the following separate items:

1. A jersey or shirt with sleeves and a number on the back;
2. Shorts – No pockets allowed;
3. Undergarment – Spandex/leggings must be under shorts and not a replacement of shorts.
4. Stockings – Players must have socks with the same base color (black, black with white stripes, etc.)
5. Shin guards
 - Are covered entirely by the socks;
 - Are made of rubber, plastic, or similar suitable material;





- Provides a reasonable degree of protection
(Caution: For the intent and purpose of player's safety, the shin guards must be age/size appropriate which covers the majority of the player's shins. It shall be the coaches' responsibility to ensure that the players are wearing proper-sized shin guards).
- 6. Boots: Soccer Cleats or Turf Shoes.
- 7. All items of jewelry are forbidden. (Medical Alert Items allowed. Medical Alert Items will need to be taped over, but not covering medical information)
- 8. Colors: The two teams must wear colors that distinguish them from each other. Should it conflict, the home team (listed first) on schedule must wear bibs. **GFA will not provide bibs.**

iv. **Determining the Outcome of a Match**

- ⚠ A goal is scored when the whole of the ball passes over the goal line, between the goalposts, and under the crossbar, provided that no infringement of the LOTG has been committed previously by the team scoring the goal.

v. **Restarts**

⚠ Kickoffs:

1. Will be awarded to the home team in the first half. In the second half, the team changes sides, and the opposite team will take the next kick-off.
2. A goal may be scored directly from kick-off. The player taking the kick-off cannot touch the ball again until it has touched another player. (If a player touches it twice during kick-off, the kick-off is an indirect free kick for the opponent.)

⚠ Throw-Ins:

1. A throw-in is awarded to the opponents of the player who last touched the ball when the whole of the ball crosses the touchline, either on the ground or in the air.
2. A goal cannot be scored directly from a throw-in.
3. Players only get one (1) chance on throw-ins.

⚠ Goal Kick:

1. A goal kick is awarded when the whole of the ball passes over the goal line, either on the ground or in the air, having last touched a player of the attacking team.
2. A goal may be scored directly from a goal kick, but only against the opposing team.

⚠ Corner Kicks:

1. A corner kick is awarded when the whole of the ball passes over the goal line, either on the ground or in the air, having last touched a player of the defending team.



2. A goal may be scored directly from a corner kick, but only against the opposing team.
3. The opposing player must be at least 10 yards from the ball.

⚠ Offside:

1. It is not an offense in itself to be in an offside position. A player is in an offside position if: she is nearer to her opponent's goal line than both the ball and the second-last opponent.
2. A player is not in an offside position if:
 - She is in her half of the field of play;
 - She is level with the second-last opponent; or
 - She is level with the last two opponents.

⚠ Free Kicks:

3. All free kicks are either direct or indirect.
 - Direct Free Kick:
 - i. If a direct free kick is kicked directly into the opponent's goal, a goal is awarded.
 - ii. If a direct free kick is kicked directly into the team's own goal, a corner kick is awarded to the opposing team.
 - Indirect free kick: the referee indicates an indirect free kick by raising their arm above their head and remains that position until the kick has been taken and the ball has touched another player or goes out of play.
 - A goal can be scored only if the ball subsequently touches another player before it enters the goal:
 - i. If an indirect free kick is kicked directly into the opponent's goal, a goal kick is awarded.
 - ii. Procedure of the free kicks is to be complied with according to the LOTG.

⚠ Penalty Kicks:

4. A penalty kick is awarded against a team that commits one of the ten offenses for which a direct free kick is awarded, inside its penalty area and while the ball is in play.
5. A goal may be scored directly from a penalty kick.
6. Procedure of the penalty kick is to be complied with according to the LOTG.

vi. Referees and Other Match Officials

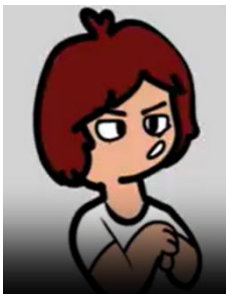
- ⚠ Each match is controlled by two or three (2-3) assigned referees, who has full authority to enforce the LOTG in connection with the match to which he has been appointed.
- ⚠ GFA Referees are responsible for enforcing the laws of the game and are the official time/scorekeepers.



- ✘ The GFA Match Coordinator is responsible for executing and overseeing the match's operation. Any harassment, disrespect, or disregard for the decision and direction provided will be recorded and handled by the GFA Football Events. Should the situation reoccur or escalates, it will be reported to the GFA Disciplinary and Ethics Committee for disciplinary measures.
- ✘ Coaches are encouraged to constructively provide insight to the referee department. GFA has mentors for the youth referee and coaches can provide feedback to the mentors first and the head of the refereeing second.

vii. Fouls and Misconduct

- ✘ A player who commits a caution or sending-off offense, either on or off the field of play, whether directed towards an opponent, a team-mate, the coaches, or any other person, is disciplined according to the nature of the offense committed.



1. Caution offenses: A player is cautioned and shown a yellow card if he commits any of the following seven offenses:
 - Unsporting behavior;
 - Dissent by word or action;
 - Persistent infringement of the Laws of the Game;
 - Delaying the restart of play;
 - Failure to respect the required distance when play is restarted with a corner kick, free kick, or throw-in;
 - Deliberately leaving the field of play without the referee's permission.
2. Sending-off offenses: A player, substitute, or substituted player is sent off if he commits any of the following seven offenses:
 - A serious foul play;
 - Violent conduct;
 - Spitting at an opponent or any other person;
 - Denying the opposing team a goal or an obvious goal-scoring opportunity by deliberately handling the ball (this does not apply to a goalkeeper within her penalty area);
 - Denying an obvious goal-scoring opportunity to an opponent moving towards the player's goal by an offense punishable by a free kick or a penalty kick;
 - Using offensive, insulting or abusive language and/or gestures;
 - Receiving a second caution in the same match a player, substitute, or substituted player who has been sent off must leave the vicinity of the field of play and the technical area



viii. **The Goalkeeper**

- ⚡ Goalkeepers will have use of their hands. The goalkeeper may punt or drop-kick the ball.
- ⚡ Goalkeepers must release the ball with-in 8 seconds.

ix. **Slide Tackling**

- ⚡ Slide tackling will now be permitted.
- ⚡ Coaches are encouraged to teach proper slide tackle technique in order to minimize risk of injury.

11. Match Suspension & Termination by the Referee

- ⚡ If a referee stops a match for reasons of- but not limited to- safety (e.g. bad weather), serious infringement of the Laws of the Game (e.g. broken leg), and interference by spectators, the following procedures must be followed:
 - i. The match is stopped and suspended for up to 15 minutes to allow conditions to improve. If conditions do not improve sufficiently to restart the match after the 15 minutes, the referee shall terminate the match.
 - ii. The terminated match will be reported to both the Head of Referee and Football Events Manager. The complete report will be submitted to the Competition Committee with recommendations for the match's status/solution.
 - iii. No appeals may be made against decisions stated in this section.

12. OTHER MATTERS

- ⚡ Anti-Doping:
 1. Doping is prohibited. The FIFA ADR, AFC Anti-Doping Regulations, the GFA Disciplinary Code, and all relevant GFA directives about anti-doping apply to the Competition.
 2. The GFA shall inform each member association using a circular of the doping control procedure for the Competition.
 3. The GFA Medical Committee shall be responsible for the approval of the WADA-accredited laboratory which shall carry out the analysis of all doping samples.

“In doping-related matters, the FIFA Anti-Doping Regulations apply in full. In the event of any discrepancy between the national regulations and the FIFA Anti-Doping Regulations, the provisions set out in the FIFA Anti-Doping Regulations shall prevail.”

- ⚡ Global Stand Against Racism:

Our league adopts FIFA's zero-tolerance policy towards all forms of racism and discrimination. This includes any verbal, physical, or symbolic acts of racism during matches, training sessions, or related events. In line with FIFA's Global Stand Against Racism, players,



coaches, and officials are empowered to use the "No Racism" gesture—crossing their wrists—to signal incidents of racial abuse. This action prompts the referee to initiate the three-step procedure:

- 1) Stop the match.
- 2) Suspend the match.
- 3) Abandon the match if the abuse persists.



This protocol is mandatory and applies to all league activities. For reporting any incidents, please complete the GFA Incident Form on the GFA website.

⚠ Concussion: Suspect and Protect

Player safety is paramount. Any individual exhibiting signs or symptoms of a concussion must immediately leave the field and seek medical attention. Symptoms may not be immediately apparent and can develop up to 72 hours post-impact. In accordance with FIFA's "Concussion: Suspect and Protect" campaign, players are prohibited from returning to play on the same day of a suspected concussion. Additionally, permanent concussion substitutes are permitted under the Laws of the Game to ensure player safety.

For additional references, please check out FIFA Concussion document on GFA Website:

[Guam Football Association | Education](#)

⚠ Safeguarding: Protecting All Participants

Our league is committed to creating a safe environment free from harassment, abuse, exploitation, or neglect. This commitment aligns with FIFA's Guardians program, which provides a framework to prevent harm and respond appropriately to safeguarding concerns. All individuals involved in the league—players, coaches, officials, and volunteers—are expected to adhere to these safeguarding principles.



Youth players are entitled to a safe playing environment where their physical, emotional, and mental well-being is prioritized at all times.

Referees are protected from intimidation, abuse, or threats during matches, ensuring they can perform their duties fairly and safely.

Any safeguarding concerns must be reported promptly using the GFA Incident Form - available on the GFA Website or contact Mr. Walter Benavente, GFA Safeguarding Officer (eventadmin1@theguamfa.com).

🚫 **IMPORTANT DATES** (Location will be at the GFA Lecture Hall):

1. **Mid-Season Youth League Meeting:** February 18, 2026.
2. **Post-Season Youth League Meeting:** March 18, 2026.

**ABSOLUTELY: NO SMOKING! NO ALCOHOLIC BEVERAGES!
NO PETS ALLOWED**

GFA YOUTH SOCCER CODE OF CONDUCT

We, the coaches, team managers, and proud parents/relatives of a GFA Youth League soccer player, promise to be model coaches, managers, and/or spectators at games in which our son/daughter/relative is a participant, as well as at other games where youth are present with us.

We will:

- 🚫 Encourage Fair Play.
- 🚫 Cheer positively for all players, regardless of which team they represent.
- 🚫 Not criticize the performance of my child or her teammates.
- 🚫 Not criticize the opponents of our team.
- 🚫 Not embarrass my player with my behavior.
- 🚫 Allow the coaches to do the coaching, and coaches will conduct themselves in a model way.
- 🚫 Show respect for the game officials by not criticizing them or undermining their authority in the eyes of our players.
- 🚫 Display good sportsmanship as a positive example for my player.
- 🚫 Represent not only my player, but also the team, our club, the league, and the game of soccer, and will conduct myself accordingly.
- 🚫 Do the greater good.



Failure to abide by the "GFA YOUTH CODE OF CONDUCT" prescribed above, the following steps will be taken by the GFA Football Events Department.

1. Verbal warning.
2. Written warning.
3. Game suspension with written documentation of the incident kept on file by organizations involved.
4. Game forfeit.
5. Parental season suspension.
6. Should the spectator be a youth member of GFA, an athlete will be suspended.

IMPORTANT CONTACTS:

Football Events Department	(671) 637-4321 ext.202
Head of Football Events	Sam San Gil: (671) 998-2766
Football Events Administrator	Ashley Besagar (671) 747-6391
Safeguarding Officer	Walter Benavente (671) 482-3849
Head of Refereeing	George Stewart (671) 688-1274
General Secretary	Joe Cepeda (671) 988-7479
Executive Director	Cheri Stewart (671) 688-1279

Version: November 29, 2025